

STATE OF MINNESOTA, } ss.  
COUNTY OF MURRAY, }

I hereby certify that the within Instrument  
was filed in this office for record on the  
30<sup>TH</sup> day of AUGUST A.D. 20 19  
at 9:00 o'clock A. M, and was duly  
recorded as Document No. \_\_\_\_\_

Evelyn C. Larson  
County Recorder

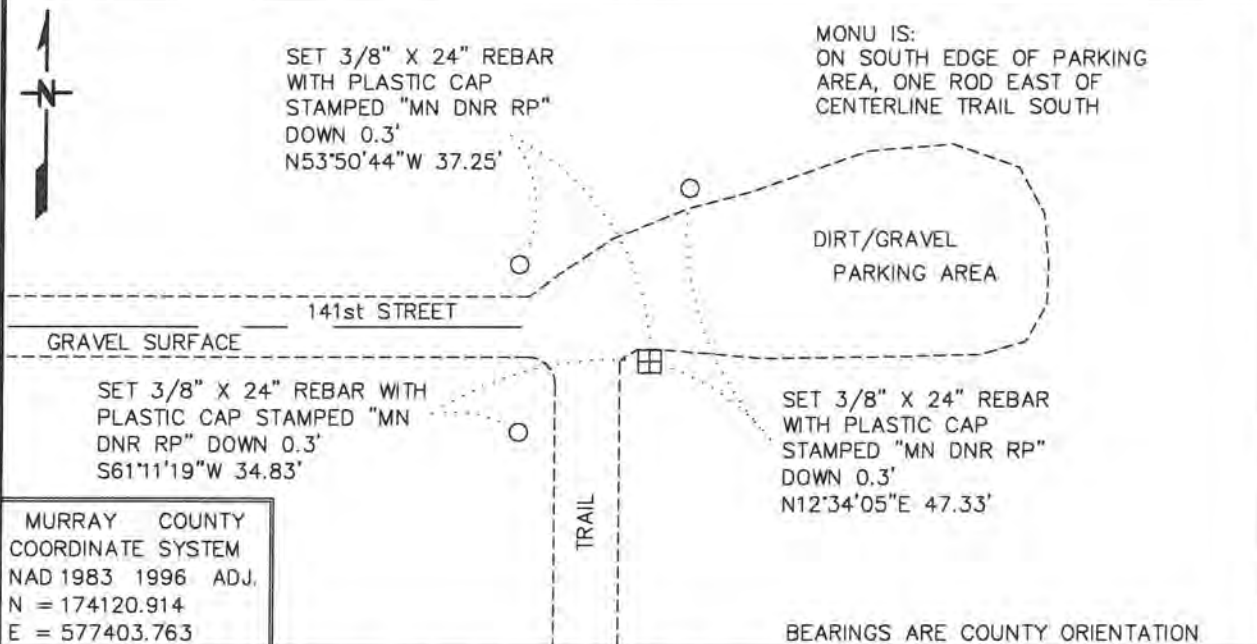
Index No. R-23

# CERTIFICATE OF LOCATION OF GOVERNMENT CORNER

NORTH QUARTER Corner of Section 25, Township 107 N, Range 39 W  
5TH Principal Meridian, State of Minnesota, County of MURRAY

At the corner location shown on the sketch:

- On 10/18/2017 found a STONE, DOWN 1.0', WITH RAILROAD SPIKES ON EAST  
DATE AND WEST SIDES  
 left monument as found,  lowered monument,  removed monument (explain)
- On \_\_\_\_\_ Placed a \_\_\_\_\_  
DATE



Statement of evidence for this corner location is on back of this page.

APRIL 2018  
WMA00745

I hereby certify that this plan, specification, or report was prepared by me or under my direct supervision and that I am a duly Licensed Land Surveyor under the laws of the State of Minnesota.

SIGNATURE Bruce W. Shepperd DATE 8/15/19 License Number 17003  
BRUCE W. SHEPPERD

North Quarter Corner of Section 25, Township 107 North, Range 39 West

**For additional information see:**

1985 November, Lowell R. Pommerening Jr., PLS 17005, with the Minnesota Department of Natural Resources filed a Certificate of Location of Government Corner for this corner in the Murray County Recorder's Office.

The DNR Division of Lands and Minerals contacted the following for survey information:

Website - [mngeo.state.mn.us](http://mngeo.state.mn.us) for GLO plat and field notes

Website - [murray-countymn.com](http://murray-countymn.com) for section and quarter section corner information

Murray County Recorder's Office

Zieske Land Surveying, Inc. of Windom

1861 U.S. General Land Office notes, obtained from [mngeo.state.mn.us](http://mngeo.state.mn.us), states "establish  $\frac{1}{4}$  sec. corner." A description of what kind of monument was set is not given. The corner is shown: 40.00 chains (2640.00 feet) from the northwest corner of Section 25

2017 October 18, the DNR Division of Lands and Minerals visited the area of the corner and found a stone, down one foot, with a railroad spike on the east and west sides of it. The stone was found to be:

2654.51 feet from the northeast corner of Section 26

on the south edge of a dirt and gravel parking lot

one rod east of the center of a trail south

Analysis of the above information led the DNR Division of Lands and Minerals to conclude that the found stone marks the location of the corner. Searched for but found no evidence of the record ties.